

Join a slug hunt



GLORIOUS GLOOP

Slime helps slugs glide on rough ground and can glue them onto surfaces.

Search out your slimy neighbours in the name of science.

What you need

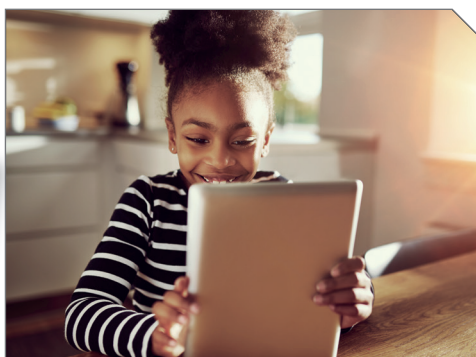
- A device with an internet connection
- Twenty minutes one evening between 5 and 11 April
- A stopwatch or clock
- A measuring tape or ruler

TOP TIP
Mild, damp nights are the ideal time to search for slugs.

How does it work?

Not everyone has a soft spot for slugs. They have a reputation as slimy invaders that munch through too many flowers and vegetables, but that's only half the story. Slugs are also an important food source for many other animals, including garden birds, insects, mammals and worms. What's more, some slugs slurp up dead plant material that would otherwise be left to rot – an important process in the habitats they call home. Some people may be tempted to use poisonous chemicals to keep their plants slug-free but this can be dangerous for many other animals. If a slug eats poison and then gets chomped up by a hungry hedgehog, it can be bad for the mammal too. Slug Week aims to boost our awareness of slimy slugs. You can learn how to tell the different types apart and find some eco-friendly ways to control these hungry visitors.

REX SHUTTERSTOCK



1 Before you start your search, grab a grown-up and visit slugweek.com. Ask them to sign up – there's a handy slug identification guide to download.



2 Head outdoors to find some slugs. Slug hunting is best done with others, so why not ask your siblings or adults to join in the fun?



3 Set a timer for 20 minutes and get hunting! Keep track of all the slugs you find in your search area and measure the longest one you find.



4 Slugs can carry dangerous parasites, so wash your hands with soap and water when you've finished. Then upload your findings to the website.